

# Start Your Career. Be Inspired. Take Charge.

- Fulfill your talents.
- Grow your career.
- Maintain balance.
- Join a diverse environment.



MANITOBA  
PUBLIC INSURANCE





$$a^m \Delta = b$$
$$= \frac{a^m}{b}$$
$$\Delta = \frac{a^m}{b}$$
$$A = \frac{\pi r^2}{2}$$
$$A = \frac{\pi r^2}{2}$$
$$A = \frac{\pi r^2}{2}$$

$$\cos^2 x + \sin^2 x = 1$$
$$\cos^2 x + \sin^2 x = 1$$
$$\cos^2 x + \sin^2 x = 1$$
$$\cos^2 x + \sin^2 x = 1$$
$$\cos^2 x + \sin^2 x = 1$$

$$y = \sin x$$
$$y = \sin x$$
$$y = \sin x$$
$$y = \sin x$$
$$y = \sin x$$

$$A = \frac{1}{2} ab \sin C$$
$$A = \frac{1}{2} ab \sin C$$
$$A = \frac{1}{2} ab \sin C$$
$$A = \frac{1}{2} ab \sin C$$
$$A = \frac{1}{2} ab \sin C$$

$$a^2 + b^2 = c^2$$
$$a^2 + b^2 = c^2$$
$$a^2 + b^2 = c^2$$
$$a^2 + b^2 = c^2$$
$$a^2 + b^2 = c^2$$

$$a^2 + b^2 = c^2$$
$$a^2 + b^2 = c^2$$
$$a^2 + b^2 = c^2$$
$$a^2 + b^2 = c^2$$
$$a^2 + b^2 = c^2$$

$$a^2 + b^2 = c^2$$
$$a^2 + b^2 = c^2$$
$$a^2 + b^2 = c^2$$
$$a^2 + b^2 = c^2$$
$$a^2 + b^2 = c^2$$

# What's your idea of a great workplace?

- Somewhere that nurtures your unique talents.
- A place where you'll know you're succeeding and your career can grow.
- A place that offers you work-life balance and competitive pay.

That place is Manitoba Public Insurance. As one of the province's Top Employers, we'll ensure you get the training, tools and encouragement you need to succeed. We provide a respectful, inclusive work environment with clear and consistent direction, and our people have the support they need to do their jobs.

We hire people with different educational backgrounds and experiences. There are many opportunities for advancement in a range of different fields, which means you can drive your career to destinations you might never have imagined. We have career opportunities in everything from customer service to claims adjusting, IT, finance, human resources and law.

## You're in the driver's seat.

Start your career.

Be inspired.

Take charge.

## Looking for a dynamic workplace?

If you want a meaningful career, shaped by your talents and skills, look no further. To apply visit [mpi.mb.ca](https://mpi.mb.ca).



Idea

De

**INNOVATION**

Research

Ex

Improvement

Concept



# Manitoba Public Insurance

As a future-oriented company, we're always looking for talented, high-performing employees.

We have about 1,750 employees working in 12 communities across Manitoba. We offer competitive salaries and benefits, along with a positive and respectful work environment.

We're a non-profit provincial Crown corporation, providing basic automobile coverage since 1971. We are also responsible for driver licensing, automobile registration and working with Manitobans to reduce risk on our roads.

## Community Involvement

We support organizations connected with road safety, medical rehabilitation and loss prevention as well as organizations such as United Way which contribute to enhancing the quality of life for Manitobans.

I want to  
**grow** my  
career.



# Benefits and Program

## Employment Benefits

We offer a comprehensive benefits program which includes flexible health, dental and vision plans, a registered pension plan, group life insurance, and leave entitlements.

## Wellness Program

We offer programs that focus on how to better achieve a balance between work and personal commitments, as well as maintain a healthy workplace culture. This includes lunch and learn offerings throughout the year, fitness classes, discounted gym memberships, mental health programming, access to an Employee and Family Assistance Program and more.

## Diversity and Inclusion

Manitoba Public Insurance believes that diversity and inclusion strengthens us. We consider ourselves to be a barrier-free organization where individual values, beliefs and practices are respected and appreciated for the diversity they bring to our work life. Indigenous persons, women, visible minorities and persons with disabilities are encouraged to apply online.

## Employee Recognition Programs

It's important to recognize our employees for their efforts. Not only do we recognize employees as they achieve milestone years in their careers, we also have several outlets for leaders and peers to reward each other for work well done.

## Professional Development

We want our employees to grow, which is why we offer support in keeping their skills up-to-date. We offer in-house training, professional development and an educational assistance program.





# Student Programs

## Want to make the most of you summer?

### Summer Students

Manitoba Public Insurance accepts resumes for summer employment opportunities. We offer the opportunity to learn and gain valuable work experience, allowing you to enhance your employment prospects upon graduation.

There are a variety of opportunities available for students with an educational background in the following fields:

- Accounting/Finance
- Business Administration/Commerce
- Computer Science
- Communications/Public Relations
- Human Resources

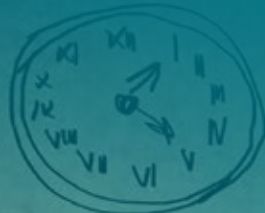
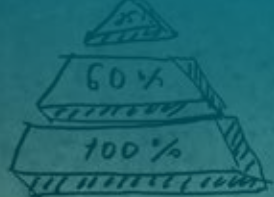
To qualify, you must be enrolled in full-time studies and returning to school for the following academic year.

### Co-op Students

Co-op placements provide structured, supervised professional work experience which Manitoba Public Insurance supports by offering paid work terms directly related to a student's academic studies. This allows students to earn academic credit for their educational program or fulfills the practical experience required for certification. Manitoba Public Insurance works in partnership with the educational facility in arranging these placements.

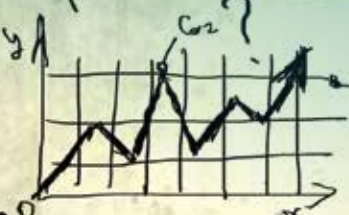
To qualify, you must be registered in a Co-operative Educational Program through your school.

An invitation to apply may be posted at your school or applications may be organized through your co-op program coordinator. Please speak with your program coordinator for further information.



cept

IDEA



Team



Social media



# Student Programs

## Professional Internships

Gain work experience and bridge the gap between post-secondary and your career.

The key to meaningful employment is having the right skills and educational background. But getting a job where you can put these things to use can be difficult without any real life work experience to back it up.

Manitoba Public Insurance's Professional Internship Program assists graduates to achieve their personal and professional growth for better career prospects by combining on-the-job training and real world work experience. This program provides graduates a valuable opportunity to focus energy on building skills, learning from real world experiences and people around them, putting theory into practice and developing a vision for the future.

To be eligible for the program you must:

- Be enrolled in a minimum two-year program at a recognized university or college in Manitoba; and
- Be in your graduation year (i.e. graduating in the year the internship is being offered); and
- Demonstrate excellent oral and written communication and analytical and decision-making skills; and
- Be in an area of study that is relevant to a career option at MPI.

## Apply today!

Visit [mpi.mb.ca](http://mpi.mb.ca) to view available positions and submit an online application.



MANITOBA  
PUBLIC INSURANCE

01/21

*Ce document existe aussi en français.*

**[mpi.mb.ca](http://mpi.mb.ca)**